

PlatinumPro®

Contractor-Grade Multimeters

Features

- AC/DC voltage
- Capacitance
- Frequency
- Auto/manual ranging
- Peak min/max
- Max/min
- Relative mode
- Data hold
- Low battery indicator
- Auto power off
- 2-year warranty



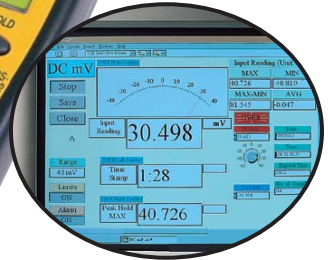
61-322

True RMS,
AC/DC current



61-324

True RMS, AC/DC
current, backlight data
acquisition and
RS-232 interface



Data acquisition and analysis with
320 ProVision™ software for 324.

61-320

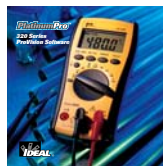


320 Series

320 Series Specifications		61-320	61-322	61-324
	RANGE & RESOLUTION	BASIC ACCURACY		
AC VOLTAGE	400.0m/4.000/40.00/400.0/750 V	1.3%	1.3%	1.3%
DC VOLTAGE	400.0m/4.000/40.00/400.0/1000 V	0.5%	0.5%	0.5%
AC CURRENT	400.0μ/4000μ/40.00m/400.0m A	—	1.5%	1.5%
DC CURRENT	400.0μ/4000μ/40.00m/400.0m A	1.5% (μA range only)	1.5%	1.5%
RESISTANCE	400.0/4.000k/40.00k/400.0k/4.000M/40.00M Ω	0.7%	0.7%	0.7%
CAPACITANCE	4.000n/40.00n/400.0n/4.000μ/40.00μ/ 400.0p/4.000m/40.00m F	1.9%	2.0%	2.0%
FREQUENCY	4.000k/40.00k/400.0k/4.000M/40.00M Hz	0.01%	0.1%	0.1%

Accessories

Includes	
Premium Test Leads w/Alligator Clips	TL-100
Optional	
Carrying Case	C-290
Current Clamp Adapters (page E-30)	
Magnetic Strap	61-565
ProVision™ Software	61-904
RS-232 Cable	61-905



61-904

**320 Series ProVision™
Software**



61-905

**Optical RS-232
Cable
For 320 Series
Meters**



UL US N12966



61-565

**Magnetic hand strap fits
Platinum Pro® and 350
Series Multimeters**

Optional magnetic strap
frees up your hands
to help you work safe.