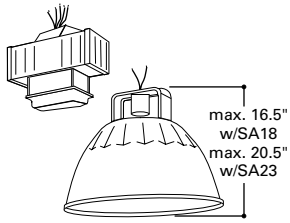
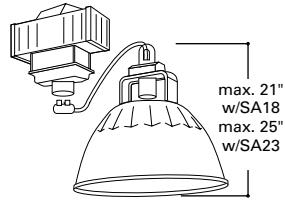


# COOPER LIGHTING - LUMARK®

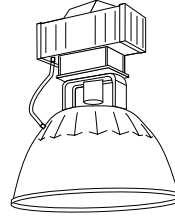
## INDUSTRIAL OPTIONS



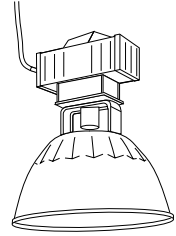
**RM**  
Remote Mount



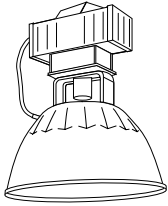
**SS**  
Space Saver



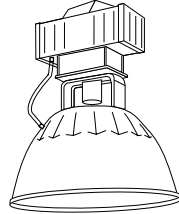
**Q**  
Quartz Restrike



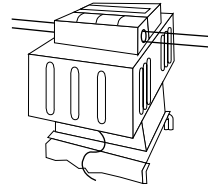
**SCF**  
3' Safety Cable, Housing to Ceiling



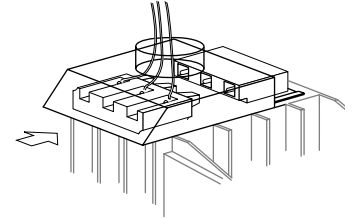
**SCR**  
3' Safety Cable, Housing to Reflector



**EM**  
Quartz Restrike

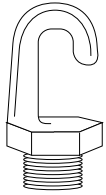


**EM/SC**  
Emergency Circuit

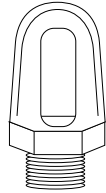


**QD**  
Full Load Disconnect Die-cast Box

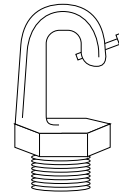
## INDUSTRIAL ACCESSORIES



**FH-1**  
Fixture Hook (2 1/2")



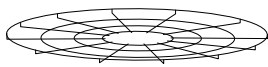
**FL-1**  
Fixture Loop (2 1/2")



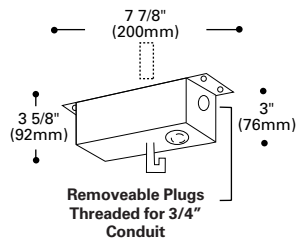
**SHK**  
Fixture Hook with Safety Screw (2 1/2")



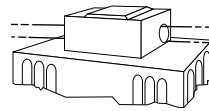
**DB**  
Drop Acrylic Refractor



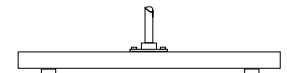
**WG**  
Wire Guard



**TPPH**  
Thru-Way Power Hook



**TWMB**  
Thru-Way Mounting Box  
(Must be Surface Mounted)



**MBT**  
Twin Mount Bracket