

# Single Gang:

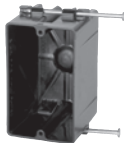
## Old Work/Manufactured Housing Boxes

### 1096-NR



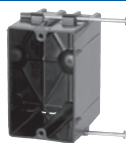
Cu. In. Volume	Catalog Number	Component Description	Outside Dimensions			UPC# 85339	Std. Pkg. Qty.	Std. Pkg. Wt. (lb.)
			D	W	H			
18.0	1096-NR	Reverse nails	3	2-1/4	3-3/4	24413	100	31

### P-181RK



Cu. In. Volume	Catalog Number	Component Description	Outside Dimensions			UPC# 85339	Std. Pkg. Qty.	Std. Pkg. Wt. (lb.)
			D	W	H			
18.0	P-181RK	Flexbox® single gang, reverse nails, molded-in Speed Klamps™	2-3/4	2-1/4	3-3/4	24398	100	22

### P-201R



Cu. In. Volume	Catalog Number	Component Description	Outside Dimensions			UPC# 85339	Std. Pkg. Qty.	Std. Pkg. Wt. (lb.)
			D	W	H			
20.5	P-201R	Flexbox® single gang, reverse nails	3-1/4	2-3/16	3-3/16	24901	100	22

### Series 9301-E



Cu. In. Volume	Catalog Number	Component Description	Outside Dimensions			UPC# 85339	Std. Pkg. Qty.	Std. Pkg. Wt. (lb.)
			D	W	H			
9.0	9301-E	Ears, wire clamps-bulk packed	1-3/4	2-3/8	3-3/4	10010	100	22
9.0	9301-EC2*	Ears, 2 wire clamps-factory installed	1-3/4	2-3/8	3-3/4	10011	100	23

### 9324-N



Cu. In. Volume	Catalog Number	Component Description	Outside Dimensions			UPC# 85339	Std. Pkg. Qty.	Std. Pkg. Wt. (lb.)
			D	W	H			
12.0	9324-N	Nails, offset panel stop	1-3/4	2-3/8	4-1/8	10165	100	28

### Series 9331-E



Cu. In. Volume	Catalog Number	Component Description	Outside Dimensions			UPC# 85339	Std. Pkg. Qty.	Std. Pkg. Wt. (lb.)
			D	W	H			
14.0	9331-E	Ears, Speed Klamps™-bulk packed	2-1/2	2-3/8	3-1/4	10235	100	29
14.0	9331-EC2	Ears, 2 wire clamps-factory installed	2-1/2	2-3/8	3-1/4	10236	100	31
14.0	9331-EK*	Ears, Speed Klamps™-factory installed	2-1/2	2-3/8	3-1/4	10239	100	29

### Series 9331-ES



Cu. In. Volume	Catalog Number	Component Description	Outside Dimensions			UPC# 85339	Std. Pkg. Qty.	Std. Pkg. Wt. (lb.)
			D	W	H			
14.0	9331-ES	Ears, snap bracket, Speed Klamps™-bulk packed	2-1/2	2-3/8	3-1/4	10242	50	21
14.0	9331-ESC2	Ears, snap bracket, 2 wire clamps-factory installed	2-1/2	2-3/8	3-1/4	10244	50	22
14.0	9331-ESK*	Ears, snap bracket, Speed Klamps™-factory installed	2-1/2	2-3/8	3-1/4	10243	50	21

\* Indicates model shown • See page 7 for Attachment Coding descriptions

