

RUST PROOF ANY-WAY PAINT

A high quality industrial maintenance enamel coating formulated for light to moderate interior/exterior industrial exposures. This product offers lasting protection against corrosion, light abrasion, weathering, and mild chemical fumes.

- Adheres to any surface (even vinyl and plastic)
- Sprays in any direction
- VOC and MIR compliant
- High gloss, high-hide coverage that provides superior corrosion protection especially on metal surfaces
- Can be applied over sound rusted areas; however, loose flakes, dirt, grease, oils, and other surface contaminants or particles should be removed first with a wire brush or sandpaper
- Lead-free
- Primer is not required but recommended over bare steel

Uses: Non-galvanized metal, wood, hard plastic, and other common surfaces, including machinery, motors, tools, cabinets, toolboxes, steel bars and railings, pipelines, drums, conduit, ducts, furniture, electrical equipment. Ideal for marking hazard areas and color coding steel. Also effective on steel, concrete (masonry), and aluminum.

CAN SIZE (NET)	WEIGHT	CASE PACK
16-ounce Aerosol (12 oz.)	7 lbs.	6 Cans
1 Quart	10 lbs.	4 Quarts

SOLVENT-BASED COLOR SELECTION

157 J.D. Green	306 Safety Black	318 Light Blue
167 Caterpillar Yellow (OLD)	307 Safety White	319 Royal Blue
168 Caterpillar Yellow (NEW)	308 Brite Red	320 Forest Green
178 School Bus Yellow	309 Aluminum	333 Dark Gray (ANSI-33)
300 Safety Purple	310 Silver*	342 Semi Flat Black
301 Safety Red	311 Gold	344 Satin Black
302 Safety Yellow	312 Flat Black	348 Meter Green
303 Safety Blue	313 Flat White	349 Meter Gray (ANSI-49)
304 Safety Green	314 Brown	361 Light Gray (ANSI-61)
305 Safety Orange	317 Tan	

*310 Silver not available in bulk

RUST PROOFING WATER-BASED PAINT

A high quality corrosion preventive coating formulated for mild to moderate interior/exterior, and industrial applications. This paint is designed to be self-priming and high gloss.

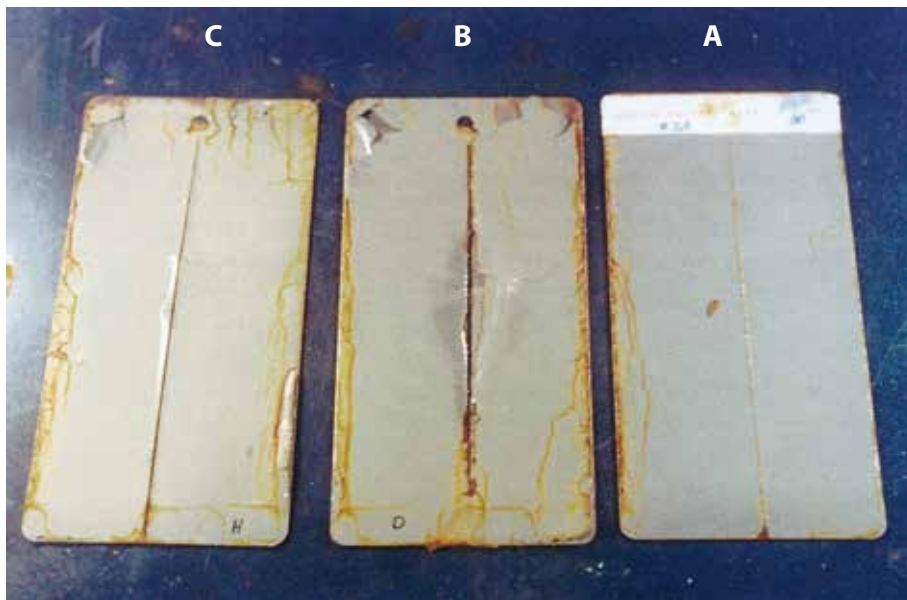
- High gloss, high-hide coverage that provides corrosion protection on metal surfaces
- Provides good resistance to moderate weather exposures including water, humidity, and temperatures up to 300°F (149°C), and color fading.
- Can be applied over firmly rusted areas; however, loose flakes or particles should be removed first with a wire brush or sandpaper
- Lead-free
- Primer is not required but recommended over bare steel

Uses: Metal, wood and other common surfaces, including non-porous plaster, machinery, motors, tools, cabinets, toolboxes, steel bars and railings, pipelines, drums, conduit, ducts, furniture, electrical equipment. Ideal for marking hazard areas and color coding steel and lumber. Also effective on steel, concrete (masonry), and aluminum.

CAN SIZE (NET)	WEIGHT	CASE PACK
16-ounce Aerosol (12 oz.)	7 lbs.	6 Cans

WATER-BASED COLOR SELECTION

3010 Safety Red	3060 Safety Black	3160 Agri. Green
3020 Safety Yellow	3070 Safety White	3170 Agri. Blue
3030 Safety Blue	3120 Flat Black	3490 Meter Gray (ANSI-49)
3040 Safety Green	3130 Flat White	
3050 Safety Orange	3150 Agri. Red	



Scribed Q-panels below represent independent salt spray test results conducted by a national testing laboratory.

Product tested was Aervoe Industries Rust Proofing Water-based Paint (panel A), and two other nationally-recognized brands (panel C = Brand H), and (panel B = Brand D). Results shown are after 96 hours of salt spray testing.

Salt spray testing according to ASTM B117 Test Method of Salt Spray (Fog) Testing.