

WSD FAMILY

Wall Switch Sensor



Overview

The WSD is a stylish, easy to install, and simple to use wall switch style Passive Infrared (PIR) sensor. It is ideal for private offices, copy rooms, closets, or any small enclosed space without obstructions. A user programmable time delay ensures that once the room is vacated the sensor will time out and turn off the lights. Additionally, the WSD sensor has several On Modes and Switch Modes that can be programmed using the front push-button. For rooms with obstructions, the Dual Technology WSD PDT Series sensor is recommended. Additionally, all WSD Family sensors have a patent pending wiring method that enables them to function either with or without a neutral connection. WSD units come pre-configured for wiring without a neutral; however, if connection to neutral is required by code, contractors can convert the unit in seconds.

Features

- 100% digital PIR detection - excellent RF immunity
- Small motion detection to 20 ft

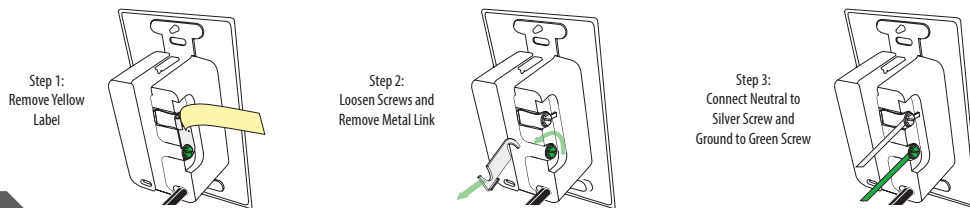
- Dual Technology (PDT) utilizes PIR / Microphonics detection (patented)
- 100% passive detection, no potential for interference with other building systems
- Self-grounding mounting strap
- Green LED status indicator
- Device accommodates powering over ground or neutral connection (patent pending)
- Line power and load wires are interchangeable - impossible to wire backwards (patented)
- Photocell standard (disabled by default)
- Compatible w/ LEDs, electronic & magnetic ballasts, CFLs, & incandescents
- Push-button programmable without removing cover plate - adjustable time delays & operating modes

ADDITIONAL INFORMATION

For additional product information, visit www.sensorswitch.com.

PHYSICAL	SPECIFICATIONS	
	ELECTRICAL	ENVIRONMENTAL
SIZE: 2.74" H x 1.68" W x 1.63" D (6.96 cm x 4.27 cm x 4.14 cm) (not including ground strap) WEIGHT: 5 oz MOUNTING: Single gang switch box MOUNTING HEIGHT: 30-48" (76.2-121.9 cm) SILICONE FREE ROHS COMPLIANT	MAXIMUM LOAD/POLE (RELAY): 800 W @ 120 VAC 1200 W @ 277 VAC 1500 W @ 347 VAC MINIMUM LOAD: None MOTOR LOAD: 1/4 Hp FREQUENCY: 50/60 Hz	OPERATING TEMP: Standard: 14° to 122°F (-10° to 50°C) LT Option (PIR): -40° to 122°F (-40° to 50°C) LT Option (PDT): -4° to 122°F (-20° to 50°C) RELATIVE HUMIDITY: Standard: 20 to 75% non-condensing LT Option: 20 to 90% non-condensing (electronics coated for corrosion resistance)

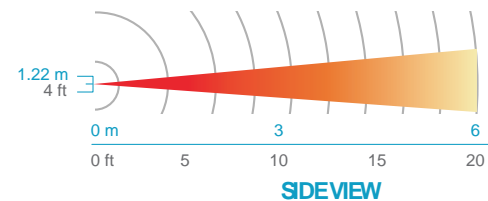
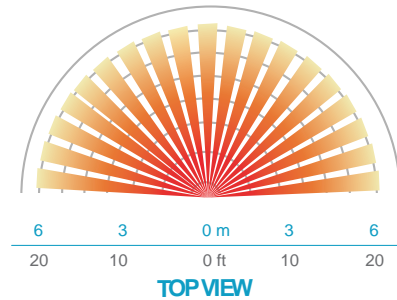
Conversion from Ground Only (No Neutral) to Neutral Wiring



COVERAGE PATTERN

WSD Wall Switch Occupancy Sensors

- Small motion (e.g., hand movements) detection up to 20 ft (6.10 m), ~625 sq ft
- Large motion (e.g., walking) detection greater than 36 ft (10.97 m), ~2025 sq ft
- Wall-to-Wall coverage
- Passive Dual Technology (Microphonics) provides overlapping detection of human activity over the complete PIR coverage area; advanced filtering is utilized to prevent non-occupant noises from keeping the lights on



OPTION INFORMATION

347 347 Voltage

- Allows sensor to be powered from and switch 347 VAC
- Cover plate for 347 VAC sensors included

LT Low Temp/High Humidity

- Required for cold/humid areas
- Sensor electronics are coated for corrosion resistance
- Operates down to -40°F/C (-4°F/-20°C for PDT)

2P Dual Relay

- Ideal for bi-level switched rooms or restroom with light & fan
- Includes two isolated relays, Pole 1 defaulted to Auto On, Pole 2 to Vacancy
- Enables separate time delay per pole - programmed via each pole's push-button
- UL Listed to switch different loads per pole - e.g. 277 VAC lights on Pole 1 and 120 VAC fan on Pole 2

SINGLE RELAY

Specifications subject to change.

Example: WSD PDT WH

Series		Operating mode ¹		Voltage		Color ³		Temp/Humidity	
WSD	Passive Infrared (PIR)	(blank)	Auto-On (default) or Vacancy	(blank)	120/277 VAC	WH	White	(blank)	Standard
WSD PDT	Dual Technology (PIR/Microphonics)	SA	Vacancy (default) or Auto-On	347	347 VAC ²	IV	Ivory	LT	Low Temp/High Humidity
		VA	Vacancy only			GY	Gray		
						AL	Light Almond		
						BK	Black		

DUAL RELAY

Specifications subject to change.

Example: WSD PDT 2P 2SA WH

Series		Operating mode ¹		Voltage		Color ³		Temp/Humidity	
WSD 2P	Passive Infrared (PIR)	(blank)	Pole 1 Auto-On	(blank)	120/277 VAC	WH	White	(blank)	Standard
WSD PDT 2P	Dual Technology (PIR/Microphonics)		Pole 2 Vacancy (default)	347	347 VAC ²	IV	Ivory	LT	Low Temp/High Humidity
		2SA	Both Poles Vacancy (default) or Auto On			GY	Gray		
						AL	Light Almond		
						BK	Black		



TITLE 20/24
ASSEMBLED in U.S.A.
5-YEAR WARRANTY

Notes

- 1 Operating modes reprogrammable via push-button except for VA version.
- 2 Wall plates included in white or ivory only for 347 VAC units.
- 3 Matching wall plate provided for 120/277 VAC units.