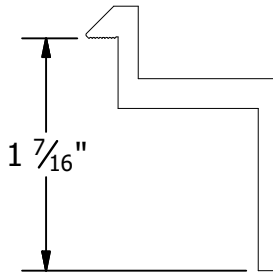


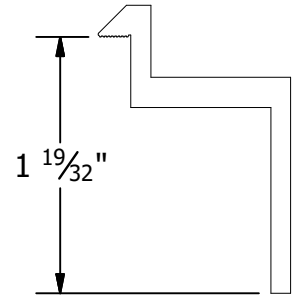
**B CLAMP**

30mm to 32mm Module Thickness  
(1.18" to 1.26")



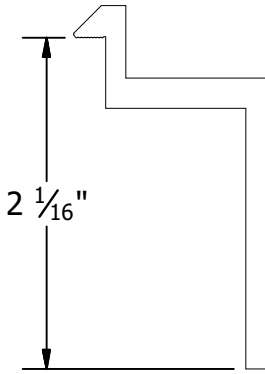
**C CLAMP**

33mm to 36mm Module Thickness  
(1.30" to 1.42")



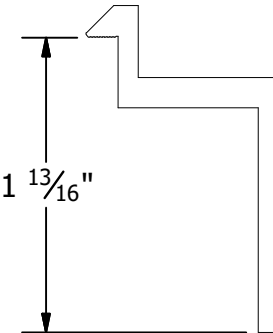
**D CLAMP**

38mm to 40mm Module Thickness  
(1.50" to 1.57")



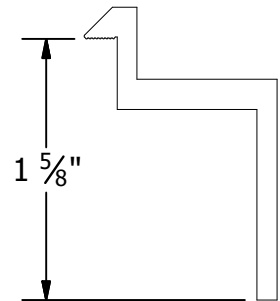
**E CLAMP**

50mm to 51mm Module Thickness  
(1.97" to 2.00")



**F CLAMP**

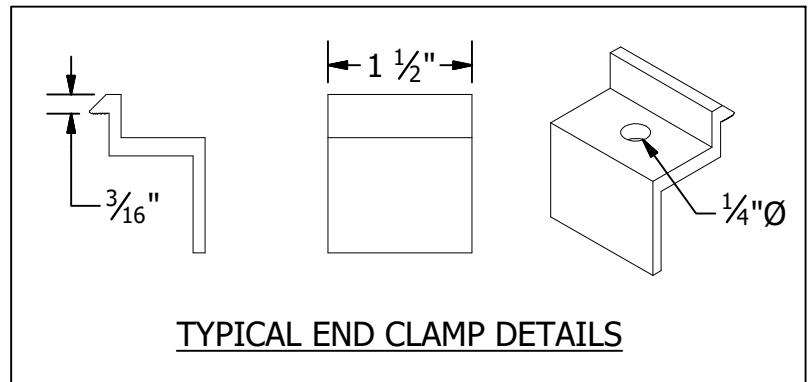
45mm to 47mm Module Thickness  
(1.77" to 1.85")



**K CLAMP**

39mm to 41mm Module Thickness  
(1.54" to 1.61")

| PART # TABLE |                      |
|--------------|----------------------|
| P/N          | DESCRIPTION          |
| 302021C      | SM ENDCLAMP B CLR AL |
| 302021D      | SM ENDCLAMP B DRK AL |
| 302022C      | SM ENDCLAMP C CLR AL |
| 302022D      | SM ENDCLAMP C DRK AL |
| 302023C      | SM ENDCLAMP D CLR AL |
| 302023D      | SM ENDCLAMP D DRK AL |
| 303024C      | SM ENDCLAMP E CLR AL |
| 302024D      | SM ENDCLAMP E DRK AL |
| 302025C      | SM ENDCLAMP F CLR AL |
| 302025D      | SM ENDCLAMP F DRK AL |
| 302026C      | SM ENDCLAMP K CLR AL |
| 302026D      | SM ENDCLAMP K DRK AL |



1411 BROADWAY BLVD. NE  
ALBUQUERQUE, NM 87102 USA  
PHONE: 505.242.6411  
WWW.UNIRAC.COM

|                |                           |
|----------------|---------------------------|
| PRODUCT LINE:  | SOLARMOUNT                |
| DRAWING TYPE:  | PART DETAIL               |
| DESCRIPTION:   | END CLAMPS - TOP MOUNTING |
| REVISION DATE: | 9/27/2017                 |

DRAWING NOT TO SCALE  
ALL DIMENSIONS ARE NOMINAL

PRODUCT PROTECTED BY ONE OR MORE US PATENTS

LEGAL NOTICE

**SM-P05**

SHEET